

## GeNext Finger Print Based T & A System



- "Push" Data Technology
- Pen Drive Interface
- Power-over-Ethernet LAN\*
- GPRS or WiFi Communication\*

Identity verification for Attendance & Access Control application in an enterprise is made fast & easy for busy entry/exit station using Finger Print based biometric System, O-zone Bio offers economic solution for definitive & secure processing of finger print for attendance in any organisation. The data is downloaded in online / offline mode to a PC for Time Office related Reports and data required for payroll. The self directive user interface, to assist subject, O-zone Bio is a trendy ABS molded and rugged DIY (do-it-yourself) product.

Fortuna uses FVC award winning sensor which is robust & effective for extreme finger condition such as, dry & wet finger. The finger templates are ISO 19794-2 standard for interoperability.

O-Zone Bio can be connected to a door lock/turnstile which is opened only on finger punching, deterring proxy and barring unwanted visitors. A Slave Reader or a Switch for Exit may also be interfaced. It is provided with a suitable termination board for easy connection & installation.

With vast experience in the field & feature-rich product, Fortuna ensures successful implementation of the system in mission critical employee centric initiative. With more than 1 million people recording attendance across Globe, our technical team has been instrumental in implementation in the most challenging sites.

### A Palette of Features :

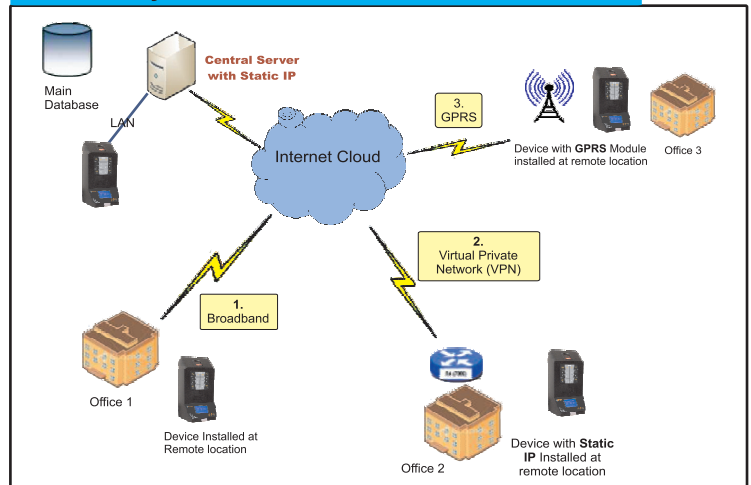
- ❖ **Push Data Technology** to Server over LAN or Internet using Broad Band/GPRS(additional hardware required)
- ❖ **Auto Updation of Finger Template** to accommodate changes With season
- ❖ **Configurable Number of Fingers** per user : 2/3/4
- ❖ **Web Server Interface** for easy & self configuration
- ❖ **LAN/PoE\*/WiFi\*/GPRS\*** based data transfer to Server
- ❖ **Logical, Unconventional design** for high usability & Graphic LCD for better visibility with Name display
- ❖ **Choice of Built-in card Readers\*** (Prox or Smart) for 1:1 matching & "Finger on card" implementation (using Smart Card)
- ❖ **Individual Mode of operation**, e.g. Finger only, Card only, Card +Finger etc.

\* Optional

### Technical Information

|                           |   |
|---------------------------|---|
| CPU                       | High Performance 32 Bit ARM Core CPU          |
| Memory                    | 90,000 Transaction Storage (upgradable)       |
| Keyboard                  | 4X4 Membrane Keyboard                         |
| Display                   | 128 X 64 Pixel Graphic Backlit LCD            |
| Power                     | Wide Range SMPS Adaptor (90-260V AC)          |
| Finger Print Sensor       | Optical(16 X 19 mm) @500 DPI (280 X 320)      |
| Sensor Surface            | Scratch Proof, effective for dry & wet Finger |
| Algorithm                 | Minutia Extraction (FVC2006 Award winning)    |
| Template                  | 6400 Template / 3200 users                    |
| Allowable Finger rotation | + / - 90 Degrees                              |
| Identification Time       | < 1 Second(Typical) for 2000 Fingers          |
| Slave Reader I/F          | Smart/Proximity as OUT Reader                 |
| Relay Output              | 12V Wet / Potential Free Contact O/P (2 Nos)  |
| Pen drive Interface       | upto 4GB for Transaction/Template Data        |
| UPS                       | Operational Back-up (Optional)                |
| Dimension                 | 200(H) X 110(W) X 50(D) mm                    |
| Temperature               | 0°C to 55°C                                   |
| Humidity                  | Upto 98% RH(Non-condensing)                   |

### Connectivity with LAN/Broadband/GPRS with Static IP



### Ordering Information :

- ❖ **O-Zone Bio** : Biometric Attendance Terminal
  - \* OPT 01 : PoE Option for Ethernet
  - \* OPT 02 / 03 : Smart / Prox Card Reader Option
  - \* OPT 04 : UPS & Battery with 2Hrs Backup (upgradable)
  - \* OPT 05 : WLAN Port
  - \* OPT 06 : Built-in GPRS Option
- ❖ **MicroSMART/MicroPROX** : Slave Reader for OUT
- ❖ **DXS** : Windows based Data Push Service for Server
- ❖ **MIS Time Pro** : Time Office MIS Software for Multi Shift Operation
- ❖ **Door Lock** : (a) Drop bolt (b) EM Lock (c) Strike
- ❖ **Cable** : (a) Communication (b) Lock (c) ReX Cable
- ❖ **Accessories** : (a) 4 port PoE Switch (b) Exit Switch (c) ID Card