



Fortuna presenting an adaptive, economical and feature rich end to end Time Attendance & Access Control Solution designed for Small office home office (SOHO), Small and Medium Business (SMB), Small & Medium Enterprise (SME)

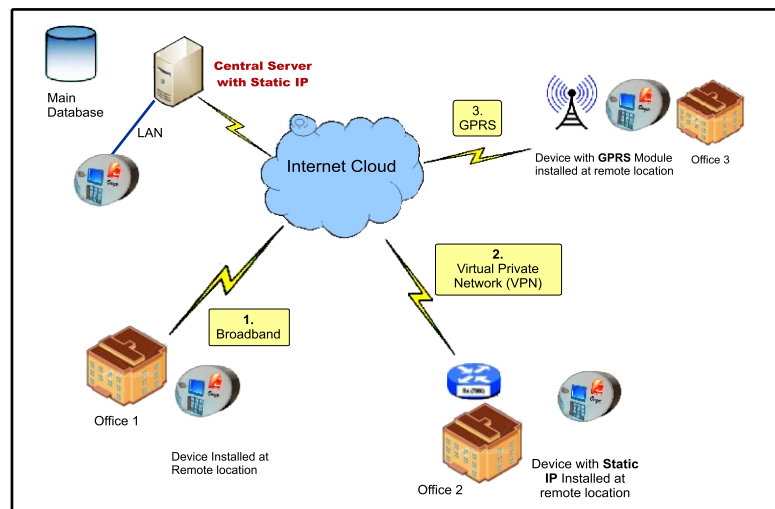


Onyx : has been made affordable and easily Manageable with Fingerprint Technology based personal Identification for Attendance & Access Control application. Onyx is stand alone terminal which enrolls the user fingers, captures & stores the Attendance records and provide the interface to computer/server for Attendance based MIS report generation.

The next generation suprema finger print sensor is faster & highly effective and economic solution for definitive & secure processing of finger print for Attendance in any Organisation. The data is downloaded in online/offline mode to a PC/Server for Attendance MIS report generation and data for Payroll/HRMS

- "Push" Data Technology
- Pen Drive Interface
- Power-over-Ethernet LAN*
- GPRS Communication*

Connectivity with LAN/Broadband/GPRS with Static IP



Technical Specification

- ❖ CPU : High Performance 32 Bit ARM Core CPU
- ❖ Memory : 25000 Transactions
- ❖ User Capacity : 1900 Templates
- ❖ Identification Time : < 1 Sec.(Typical)
- ❖ Finger Print Sensor : Optical
- ❖ Display : 128 X 64 Pixel Graphic Backlit LCD
- ❖ Keyboard : 16 Key Membrane Keyboard
- ❖ Fingerprint Sensor : Optical @ 500 DPI
- ❖ Sensor Surface : Scratch Proof
- ❖ Affordable Finger Rotation : +/- 90 Degree
- ❖ User Friendly : Web Server I/F for managing terminal
- ❖ Communication : 100 MBPS TCP/IP PoE/GPRS (Optional)
- ❖ Mifare Smart Card Reader (Optional)
- ❖ USB Pen Drive Interface
- ❖ Access Control ? Wet (12V) / Potential Free Contact O/P (2MS)
- ❖ UPS with 2 Hours Battery Backup (Optional)

A Palette of Features :

- ❖ **Push Data Technology** to Server over LAN or Internet using Broad Band/GPRS(additional hardware required)
- ❖ **Auto Updation of Finger Template** to accommodate changes With season
- ❖ **Configurable Number of Fingers** per user : 2/3/4
- ❖ **Web Server Interface** for easy & self configuration
- ❖ **LAN/PoE*/GPRS*** based data transfer to Server
- ❖ **Logical, Unconventional design** for high usability & Graphic LCD for better visibility with Name display
- ❖ **Choice of Built-in card Readers*** (Smart Card) for 1:1 matching & "Finger on card" implementation (using Smart Card)
- ❖ **Individual Mode of operation**, e.g. Finger only, Card only, Card +Finger etc.

* Optional

Physical & Environmental Specs

- ❖ Sleek Oval shape ABS enclosure
- ❖ Size : 176 X 120 mm Oval shape X 42 (D) mm
- ❖ SMPS Power : Input - 90 to 270V AC, Output :12V DC
- ❖ Operating Temperature : 0 to 55 Deg.C
- ❖ Humidity : Upto 99 % RH (Non-condensing)

Ordering Information:

- ❖ **Onyx** : Biometric Attendance Terminal
 - * OPT 01 : PoE Option for Ethernet
 - * OPT 03 : Smart Card Reader Option
 - * OPT 04 : UPS & Battery with 2Hrs Backup (upgradable)
 - * OPT 06 : Built-in GPRS Option
- ❖ **DXS** : Windows based Data Push Service for Server
- ❖ **MIS Time Pro** : Time Office MIS Software for Multi Shift Operation
- ❖ **Door Lock** : (a) Drop bolt (b) EM Lock (c) Strike
- ❖ **Cable** : (a) Communication (b) Lock (c) ReX Cable
- ❖ **Accessories** : (a) 4 port PoE Switch (b) Exit Switch (c) ID Card

