

XMATCH fingerprint device provides speedy and efficient fingerprint authentication by incorporating the latest technology like PoE, GPRS, USB for Data download. It provides customers with the opportunity to improve and upgrade existing systems at reduced installation and support costs.



Technical Specs :

| | |
|----------------------------|--|
| Number of templates | : 9500 |
| Event Buffers | : 92,000 |
| Max Fingers per user | : Default 2 Finger per user |
| Operation Modes | : Card Only; UID + Finger; Card + Finger; Finger Only; UID only |
| Scanner (Sensor) | : High Quality Optical Sensor(SUPREMA) |
| Card Reader (OPTIONAL) | : Mifare |
| Exit Reader Port | : Biometric Reader/Card Reader/Egress switch |
| Communication Port | : TCP/IP, RS232C/GPRS (Optional)/WiFi(Optional) |
| Power-over-Ethernet | : The LAN Port supports PoE with 24V DC Power Supply (Optional) |
| USB PEN Drive Interface | : USB PEN Drive Interface for back-up & restore of Transaction data, Template Data in encrypted Mode |
| LCD | : 3" Graphic LCD with 128 X 64 Pixel with Blue Backlit & White Character for sharp & stylish reading |
| Keypad | : 16 Key Sealed Capacitive Keypad with 3 Function Keys reserved for Administrative Functions with Password / Pass Finger based entry restriction |
| Human Voice Interface | : Audio Buzzer & Human Voice Speaker (Local Language possible) & Visual Indication using Green LED Indication for Acceptance |
| Power Supply | : SMPS Power Supply with Continuously operable on 90 -260 V, 50Hz. Ac, No need of Voltage Stabilizer. |
| Additional Features | : Features like Time Masking, Employee Masking, Paging, Bulletin & Programmable IN/OUT(Break-in & Break-out) feature, Master Card |
| Battery Back-up (optional) | : Li-Ion Battery with Intelligent Charging for back-up of 2 Hours |
| Dimension (L X H X D) | : 202 X 90 X 53 mm |

Benefits :

- Scratch resistant best Optical sensor
- Industry leading fingerprint identification speed.
- Available with latest smart Card technology
- User wise Access Modes
- Suitable for Time Attendance as Well as Access Control applications
- Adjustable FFR / FAR as per Customer Needs

Key Features :

- Stores upto 20,000 Users, with 16 Digit Employee ID, Name, Validity, Birthday
- USB PEN Drive Interface for back-up & restore of Transaction data, Template Data in encrypted Mode
- Bidirectional Data Push Technology to Server using LAN / Broad Band / GPRS
- Data transfer in encrypted Mode for controlling the possibility of data hacking
- Easy template distribution across multiple devices
- The LAN Port supports PoE with 24V DC Power Supply
- MIFARE Smart Card Interface with "Finger-on-card" feature (Optional)



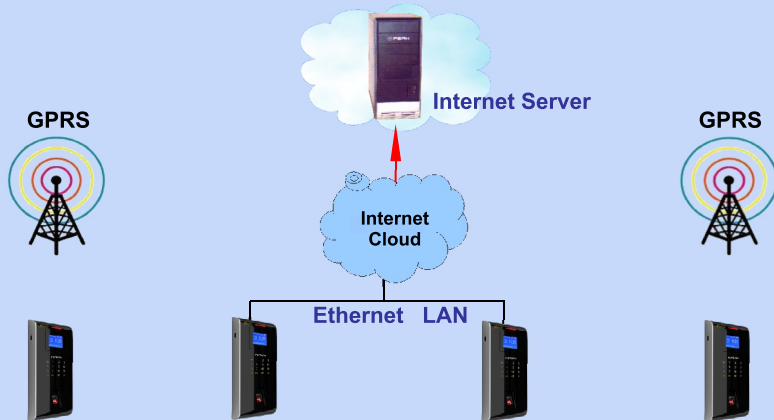
PARTICULARS

SPECIFICATIONS

Optical

| | |
|----------------------------------|---|
| Fingerprint Sensor | : Fully scratch resistant, effective for dry & Wet finger. The biometric fingerprint Sensor is from SUPREMA with best/efficient finger verification algorithm & FVC accreditation. ISO 19794-2 compatible Template with auto-updation of template feature to accommodate changes. |
| CPU | : 400 MHZ DSP |
| Resolution (DPI) | : 500+ |
| Image Size (pixels) | : 280 X 320 |
| Sensing Area (mm) | : 16.0 X 19.0 |
| Authentication / Identification | : 1:1& 1:N (User Groups facility for faster verification) |
| Finger Rotation | : The Biometric reader capable of sensing finger rotation of +/- 30 Deg. with Allowable Finger Displacement: +/- 5 mm |
| Template Size | : 256 bytes ISO 19794-2 Compatible Template |
| Template Upload/Download from PC | : YES |
| Enrollment Time | : 2 Sec |
| Identification Time: 1000 | : < 1 Sec |
| FAR | : 0.001% |
| FRR | : 0.1% |

Data Transfer to Internet Server on Web



In this Connectivity Option, all the X-Match's at installation Location(any where in the World) will be connected to Internet using Broad Band. A Online Application will be deployed at the Server. Attendance Data will be pushed in online mode from Attendance Terminals. Data can also be pushed using GPRS connectivity.

Access Control Features :

Time Zone /Shifts : 8

| | |
|-----------------------|--|
| Anti Pass Back | : Local using OUT Card Or Biometric Reader |
| ACS Hardware Features | : Access Control Relay Output, Request-to-Exit Input & Lock Feedback Input for DOTL alarm With proper Screw Termination, Additional Relay output |

Compatible Software :

Remote Communicati on Software : Compro 7(Polling) / DXS Service(Push)

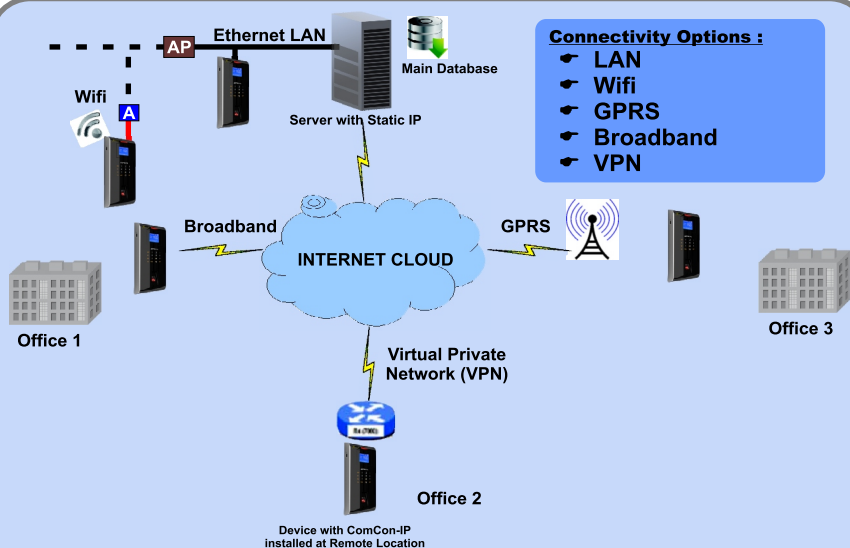
Reporting / Attendance Software : **TPP++** with MS Access suitable for SME (Free); **TPE** with SQL Server suitable for Industry (Optional);

Swayam Seva :
Web based ESS & MIS Application

Smart Finger :
Terminal & Template Management Software

Connectivity Options :

- ☛ LAN
- ☛ Wifi
- ☛ GPRS
- ☛ Broadband
- ☛ VPN



Devices connected through Broadband, VPN or GPRS, pushes the attendance data to the centralized server. Application software Smart Finger Plus (Web based) will be deployed at the centralized location.

FORTUNA
IMPEX PVT LTD
12, Harrington Mansions
8, Ho Chi Minh Sarani
Kolkata - 700 071 (India)

☎ : +91 33 2282 2270 ☎ : +91 33 2282 2267

✉ : info@fortunaindia.com 🌐 : www.fortunaindia.com